



GEOLOGICAL SURVEY OF PAKISTAN
Ministry of Energy (Petroleum Division)
Government of Pakistan

A Joint Venture of
CHINA GEOLOGICAL SURVEY
Ministry of Natural Resources
Peoples Republic of China

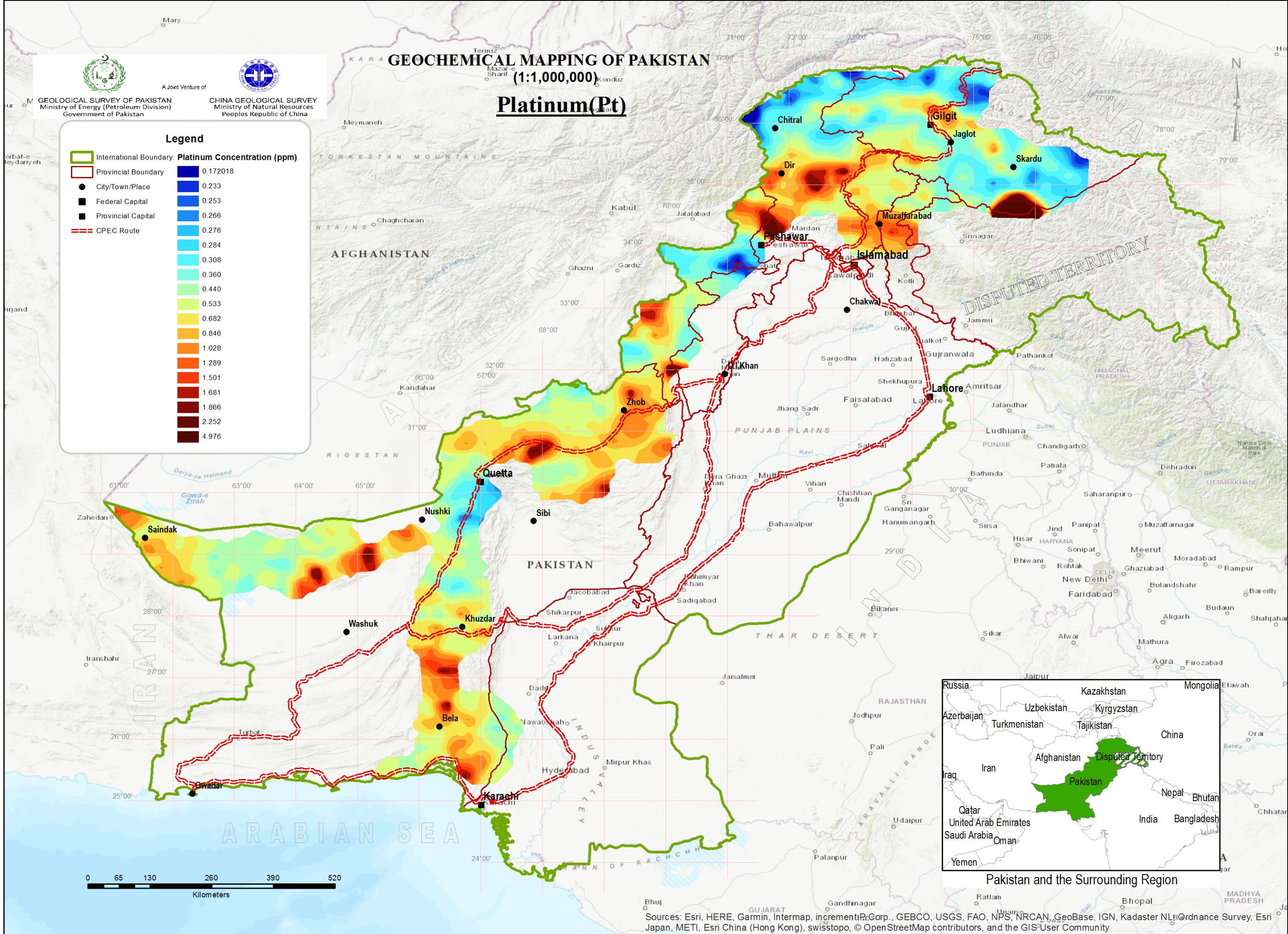
GEOCHEMICAL MAPPING OF PAKISTAN

(1:1,000,000)

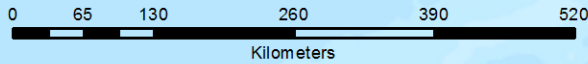
Platinum(Pt)

Legend

	International Boundary		0.172018
	Provincial Boundary		0.233
	City/Town/Place		0.253
	Federal Capital		0.266
	Provincial Capital		0.276
	CPEC Route		0.284
			0.308
			0.360
			0.440
			0.533
			0.682
			0.846
			1.028
			1.289
			1.501
			1.681
			1.866
			2.252
			4.976



Pakistan and the Surrounding Region



Sources: Esri, HERE, Garmin, Intermap, incrementP Corp., GEBCO, USGS, FAO, NPS, NRCAN, GeoBase, IGN, Kadaster NL, Ordnance Survey, Esri Japan, METI, Esri China (Hong Kong), swisstopo, © OpenStreetMap contributors, and the GIS-User Community