

LEGEND

QUATERNARY	Recent	Qal	Alluvium
	Pleistocene	Qm	Margine, mostly covered by alluvium
TERTIARY	LADAKH-KOHOSTAN ISLAND ARC LADAKH INTRUSIVES (II & III Phase Intrusives)		
		(p) (s) (b)	Pegmatites, acidic & basic dykes and sills
	Miocene	Tlg	Leuco-granite
	to	Tlgd	Light grey, medium to coarse grained granodiorite
	Paleocene	Tldp	Porphyritic diorite
	Tldh	Hornblende diorite	
	Tld	Diorite	
CRETACEOUS	SHIGAR VOLCANICS		
	Late Early Cretaceous	Ksva	Volcanic ash, soft and friable
		Ksv	Volcanics of Calc-alkaline sequence greenstone associated with andesite, rhyolite and agglomerate intruded by diorite apophyses.
	METASEDIMENTS		
	Early Cretaceous	Kym	Grey and white marble, fine to medium grained
		Kyp	Interbedded grey to dark grey paragneiss / chloriteschist member.
	KATZARAH FORMATION		
	Early Cretaceous	Kkp	Green and dark grey para-amphibolite and grey paragneiss well-laminated, associated with dacite sills
		Kkm	Coarse grained saccharoidal marble
	PRECAMBRIAN	ASIAN PLATE	
DASSU GNEISS			
Late Cretaceous		Kdg	Orthogneiss, well-foliated
	NEOSLO META PELITES		
	pEnp	Paragneiss, biotite schist and amphibole schist equivalent to Balti group	

GEOLOGICAL SYMBOLS

- Main Kara Korum Thrust
- Foliation, with trend
- Vertical foliation
- Lamination
- Fault, dashed where probable
- Anticline
- Gradational contact
- Contact, dashed where probable
- Cross-section line

NON-GEOLOGICAL SYMBOLS

- Spring
- Hot spring
- Bridge
- Glacier
- Metalled road
- Unmetalled road
- River and tributaries
- 5619 *Height (in metres)

Scale 1:50,000
Metres 1000 500 0 1 2 3 4 5 Kilometres

Geology by - Sajid Hussain Shah
Rafi Ullah Khan

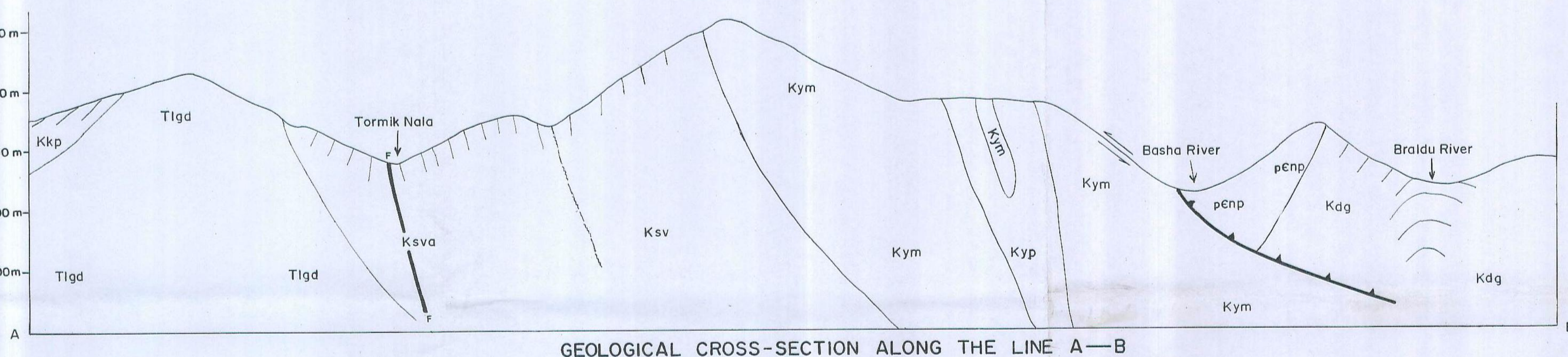


FIG. I - GEOLOGICAL MAP OF THE BAGHICHA QUADRANGLE (43-M/6), SKARDU DISTRICT, NORTHERN AREAS, PAKISTAN.