

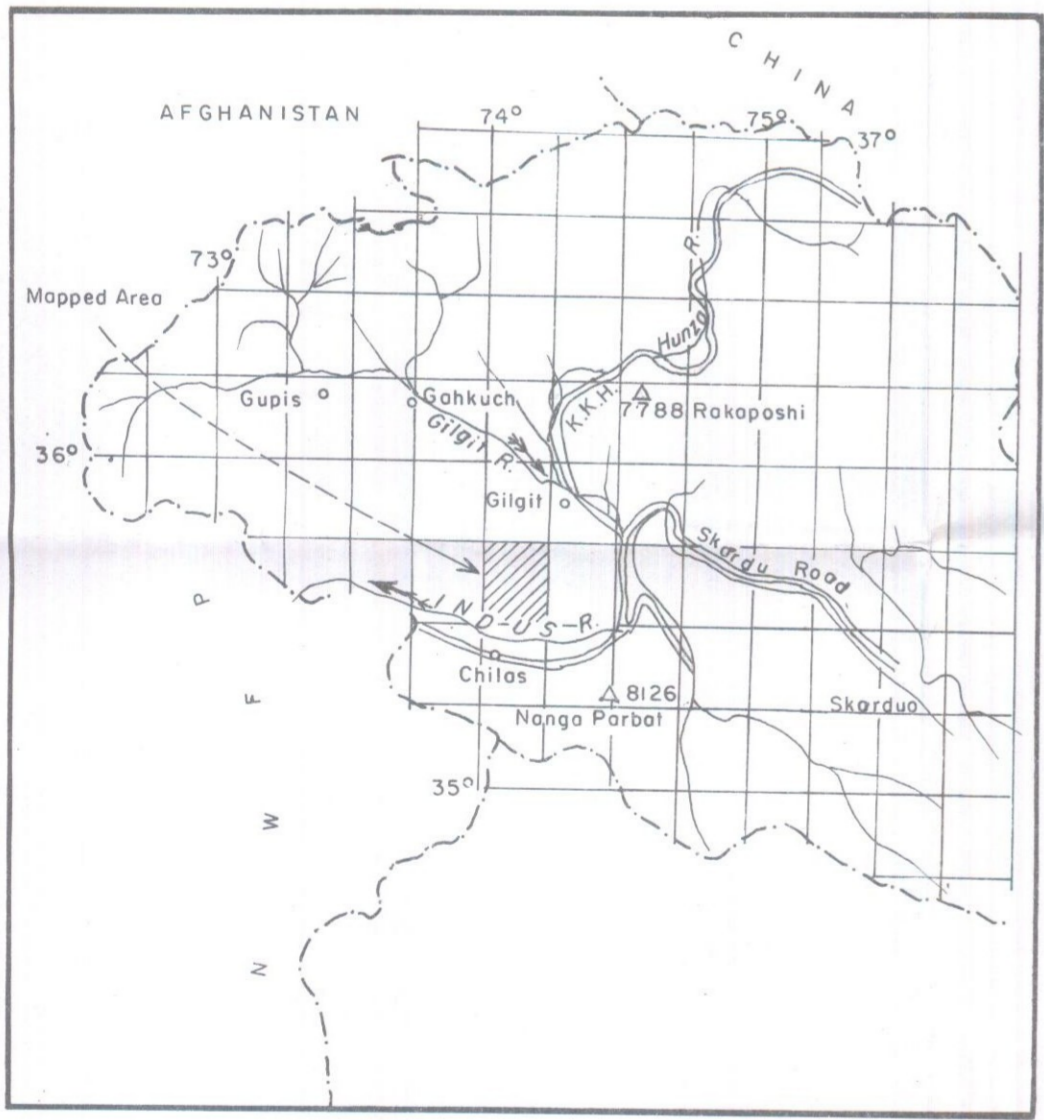
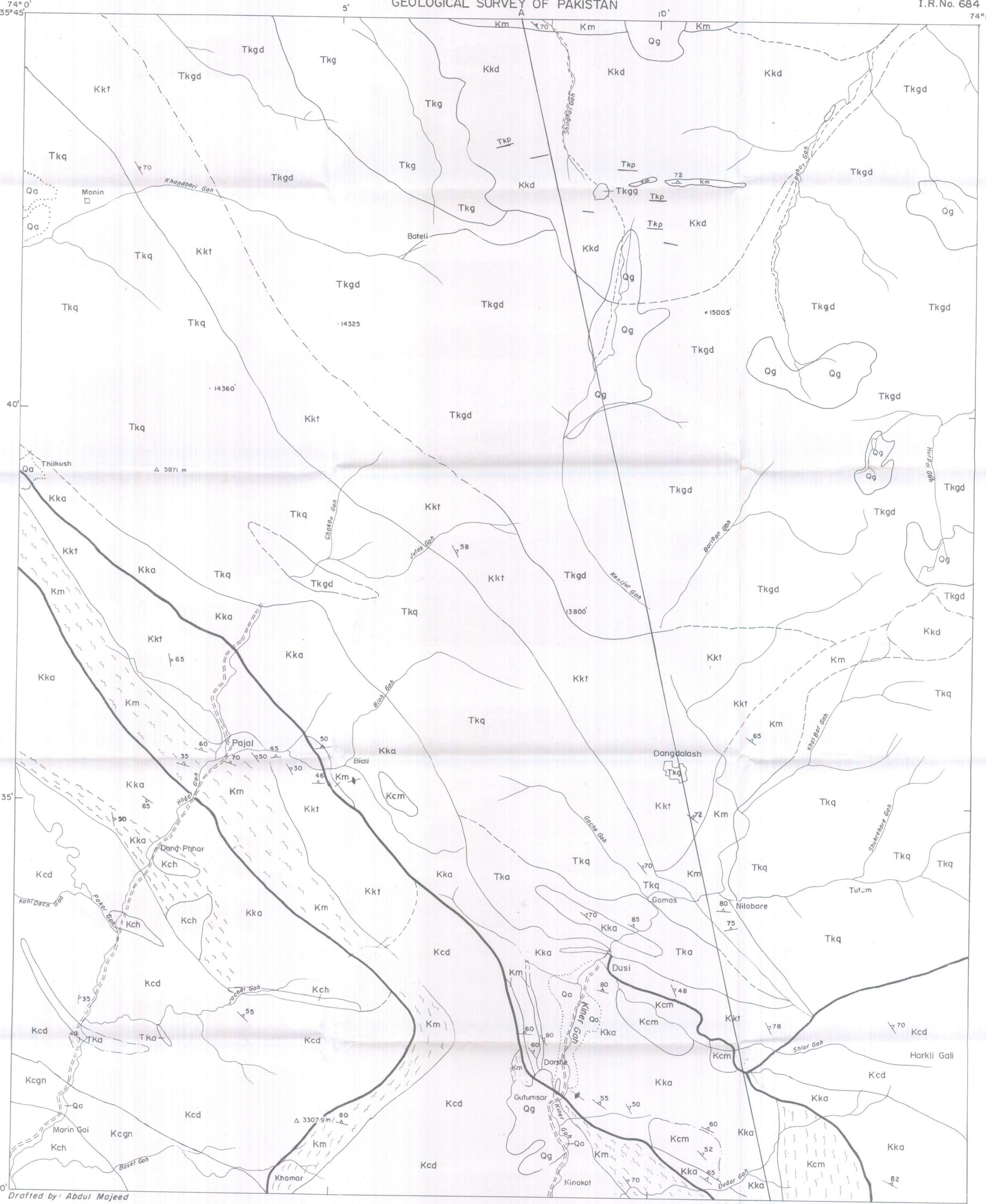
- LEGEND**
- Quaternary**
- Recent sub-recent: Qa Alluvium, Qg Glacio-fluvial deposit
- Cenozoic**
- Tertiary**
- Oligocene to Miocene: Tkp Aplite-Pegmatite, Tkgg Granophytic granite
 - Partially Deformed Plutons: Tkg Granite
 - Paleocene to Eocene: Tka Adamielite, Tkgd Mostly granodiorite with quartz diorite and diorite, Tkq Mainly quartz diorite with granodiorite
- Deformed Plutons**
- Late-Cretaceous: Kkt Mainly tonalite associated with diorite & quartz diorite, Kkd Mainly deformed diorite with metasediment xenoliths intruded profusely by leuco dykes.
- Mesozoic**
- Cretaceous**
- Early to Late Cretaceous: Kcd Diorite, Kcgn Gabbro-norite, Kch Hornblende associated with gabbro-norite pyroxinite and peridotite, Kcm Mafic and ultramafic cumulate rocks consist of troctolite, gabbro, wehrlite, dunite with mafic and ultramafic pegmatites.
- Northern Amphibolites**
- Early Cretaceous: Kka Kiner amphibolites comprises metagabbro-diorite metavolcanics associated ultramafic lenses, pockets and small linear bodies.
- Meta Sediments and Volcanics (Jaglot group)**
- Early Cretaceous: Km Mainly biotite schist and paragneisses associated with amphibolite at places inter bedded with phyllite and quartzite even graded into migmatite.

GEOLOGICAL SYMBOLS

- 70 Foliation
- Vertical Foliation
- A—B Line of section
- Shear Zone
- Contact (a) Sharp (b) gradational (c) probable
- Fault

NON-GEOLOGICAL SYMBOLS

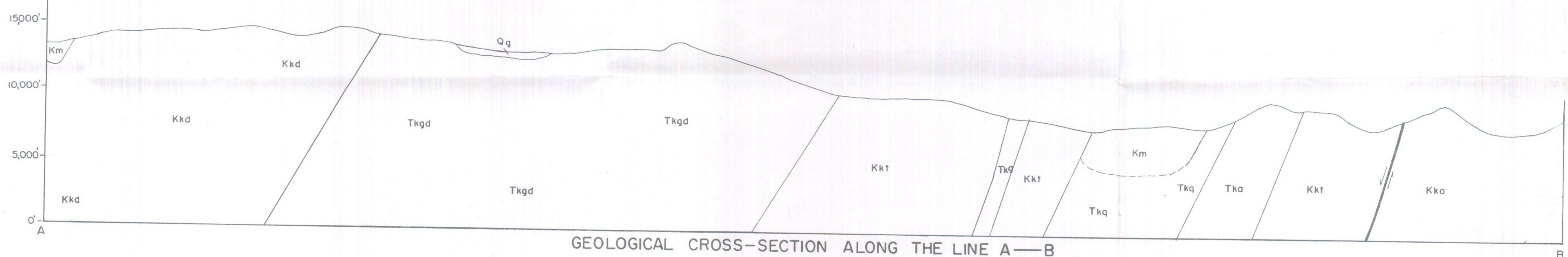
- Nala (Gah)
- 10853 Δ Spot height in feet
- Unmetalled road
- Foot path



Scale
Kms 0 10 20 30 40 50
MAP OF NORTHERN AREAS PAKISTAN
SHOWING LOCATION OF MAPPED AREA

Scale 1:50,000
Furlongs 6 4 2 0
Metres 1000 500 0 1000 2000 3000 4000 5000

Geology by:- Naseer Ali Khan
Ghulam Mujtaba
Tahseenullah Khan &
Hamid Hussain



GEOLOGICAL CROSS-SECTION ALONG THE LINE A—B

FIG.1 GEOLOGICAL MAP OF THE KINER GAH QUADRANGLE (43-I/2) DIAMIR DISTRICT, NORTHERN AREAS, PAKISTAN.