

**Legend**

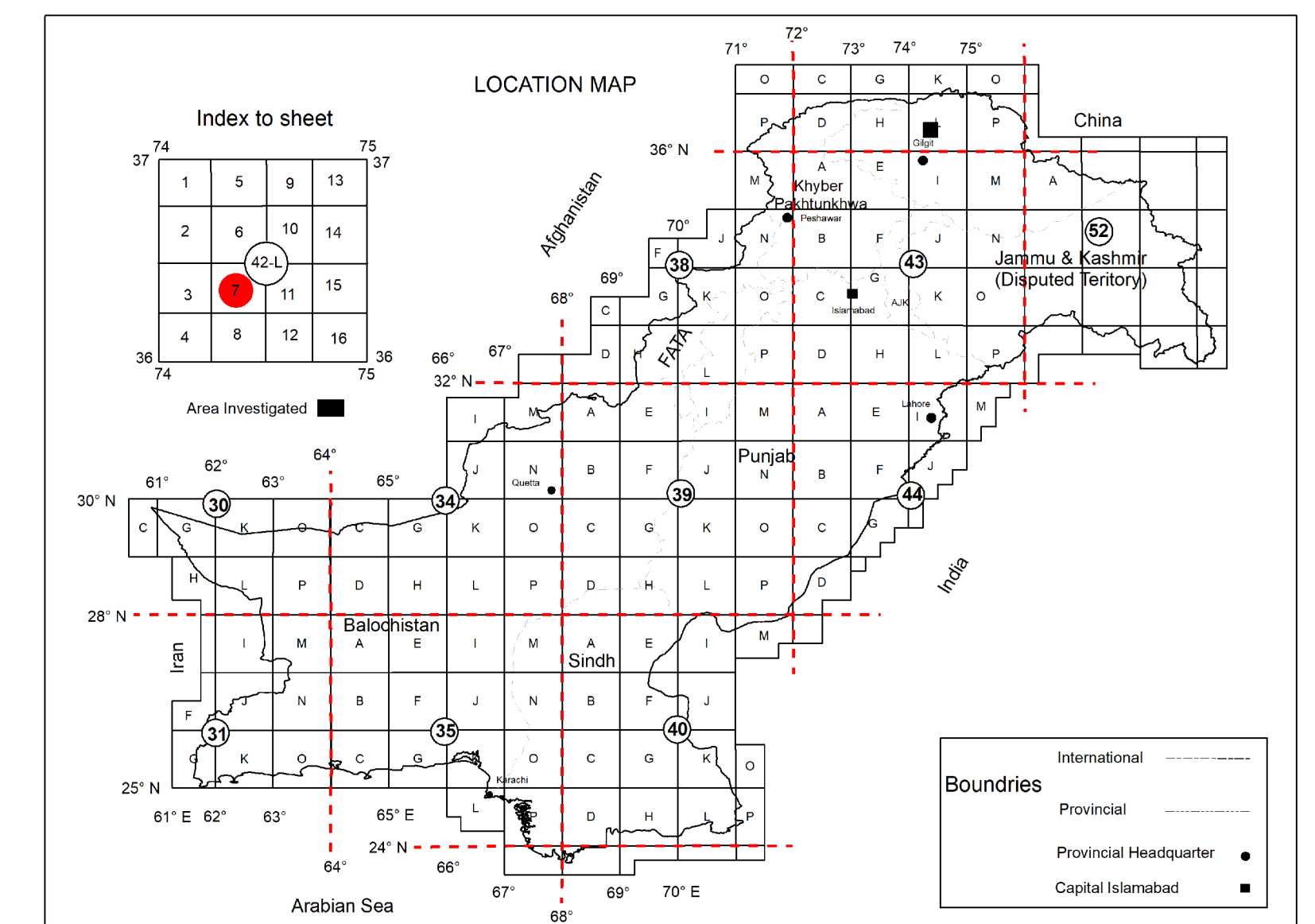
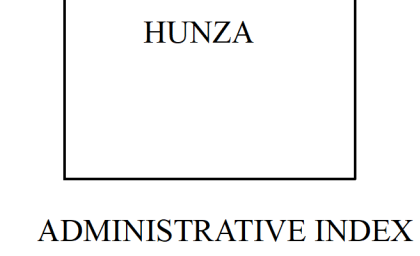
Period	Unit	Description
CENOZOIC	Quaternary	Qa: Undifferentiated alluvium comprising of consolidated material of sand, clay and silt
		Alluvium
MESOZOIC	Cretaceous to Miocene	Kkbgd: Mixed lithology comprising of granodiorite, orthogneiss with minor aplite
		Kkmc: Gneisses resulted due to partial melting of the existing plutons due to high temperatures produced during the collision of Karakoram plate and Kohistan Island Arc
	Greenstone Complex	Kgss: Major slate with minor volcanic, quartzite and phyllite
		Slate
PALEOZOIC	Carboniferous to Permian	Kgsqs: Quartzite Schist
		Kgssch: Medium bedded chlorite schist with trace amount of talc
	Baltit group	Kgs: Undifferentiated rocks comprising of volcanics and metasediments including marble and slate/phyllite
		Undivided
CENOZOIC	Quaternary	CPbm: Light gray colour to white, coarse grained, sugary texture
		Marble
	Carboniferous to Permian	CPbsch: Schist
		CPbms: Metasediments including andalusite bearing hornfels, slates, phyllite and argillaceous limestone
CENOZOIC	Quaternary	CPb: Gneisses, Schists, quartzite, marble and dolomitic limestone
		Undivided

**Geologic Symbols**

- Conformable contact, dashed where inferred
- - - Contact with quaternary Deposits
- ⤴ Thrust Fault

**Non-Geologic Symbols**

- ▲ Height (Meters)
- Towns/Localities
- Perennial streams
- A—B Cross Section Line
- Metalled Road
- - - Unmetalled Road
- Glacier

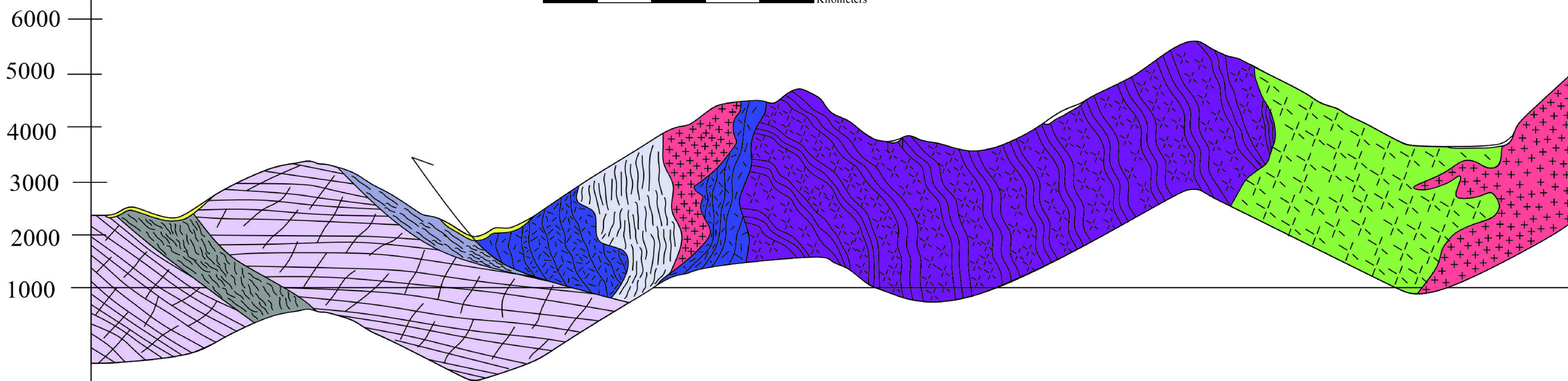
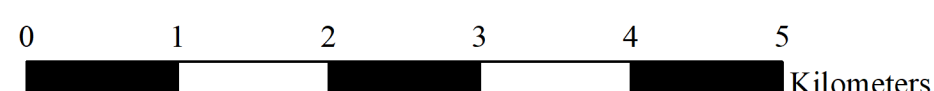


GIS & Cartography by: Jawad Zeb

Scale 1:50,000

Authors: Jawad Zeb  
Umer Farooq  
Jawad Arif

Meters



A

B

Cross Section Line AB



Issued by Director Geological Survey of Pakistan

**Geological Map of Chalt Quadrangle,  
District Hunza, Gilgit-Baltistan,  
Pakistan,  
2024**