

## Legend

- |                           |  |
|---------------------------|--|
|                           | Unconsolidated gravity driven material consisting of boulders, cobbles, pebbles                    |
|                           | Screed   |
|                           | Consolidated deposits of clays   |
| <b>Lacustrine Deposit</b> |  |
|                           | Undifferentiated alluvium comprising of consolidated material of sand, clay and silt               |
| <b>Alluvium</b>           |  |
|                           | Boulders, cobbles, pebbles embedded in the matrix of sand and clay, formed due to glacial activity |
| <b>Moraine</b>            |  |
|                           | Mainly granite with granodiorite and diorite at places   |
| <b>Granite</b>            |  |
|                           | Granodiorite with intruded by dioritic and granitic intrusions at places                           |
| <b>Granodiorite</b>       |  |
|                           | Tuffs with minor slates  |
| <b>Darkot Group</b>       |  |
|                           | Marble with minor slates   |
|                           | Arenaceous limestone with minor quartzite  |
|                           | Gneiss with minor quartzite and schist   |
|                           | Schist with minor slates and gneisses  |
| <b>Schist</b>             |  |
|                           | Predominantly quartzite with minor Slates and gneisses   |
| <b>Quartzite</b>          |  |
|                           | Predominantly slates with minor quartzite, schists and phyllites                                   |
| <b>Slate</b>              |  |

## Geologic Symbols

- Conformable Contact, dashed where probable
- Contact with Quaternary Deposits
- Fault, dashed where probable
- Cross Section Line
- Foliation
- Joint

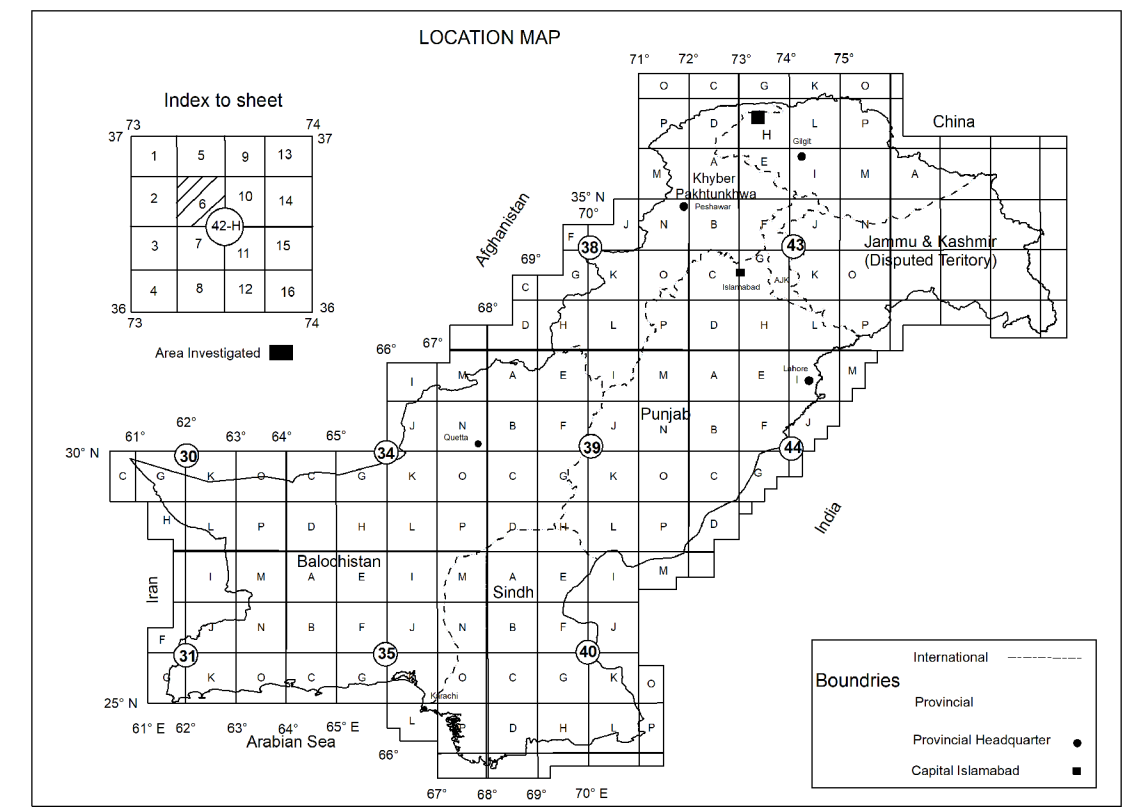
## Non Geological Symbols

- Height
- Towns/Localities
- Hot Spring
- Pass
- Unmetalled Road
- Perennial Stream
- Ephemeral Stream
- Glacier
- Lake

## Economic Geology

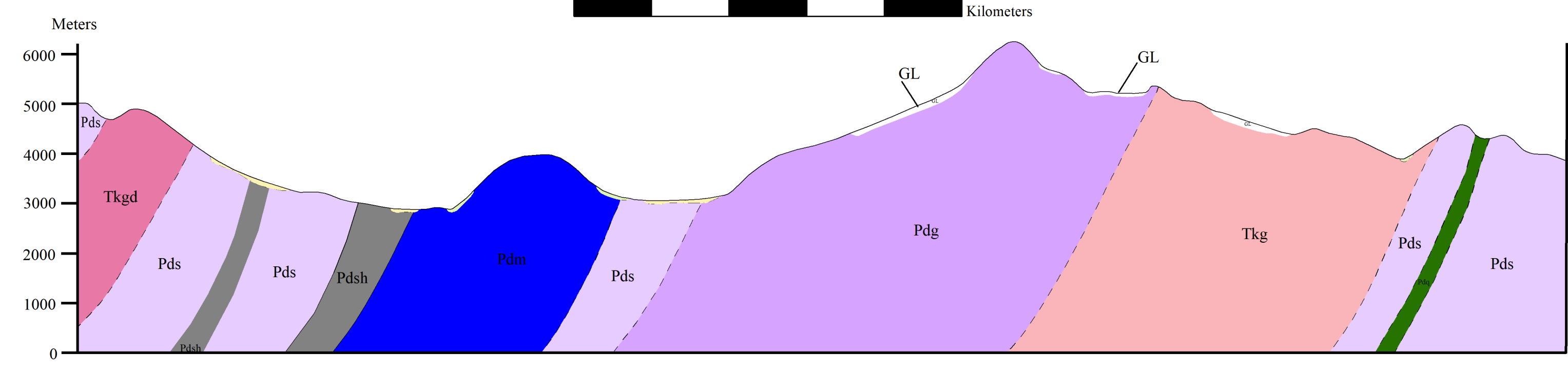
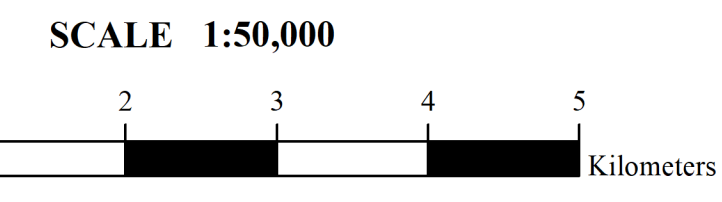
- (Sb, Cu, Fe, Ga, Pb) Mineral Showings  
(Antimony, copper, iron, gamet, Lead)  
(Sb, Cu, Fe, Ga, Pb)

Ghizar



GIS & Cartography by: Atif Ali Hassan  
Hameedullah Khan

Geology By: Muhammad Nakir Shah  
Muhammad Waqas  
Muhammad Nasir  
Shoaib Ahmed Khan  
Atif Ali Hassan  
Yousaf Haroon



Issued by Director General, Geological Survey of Pakistan  
**Regional Geological Map of the Darkot Quadrangle,  
District Ghizer, Gilgit-Baltistan, Pakistan  
2024**