

**LEGEND**

Recent: Loose material (Ql)  
 Quaternary/Pleistocene: Moraine Terrace and alluvial cover (Qm)

**KOHISTAN BATHOLITH**

Paleocene to Eocene: Granite (Tg)  
 Granodiorite (Tgd)  
 Late Cretaceous: Diorite (Kd)

**CHALT VOLCANIC GROUP**

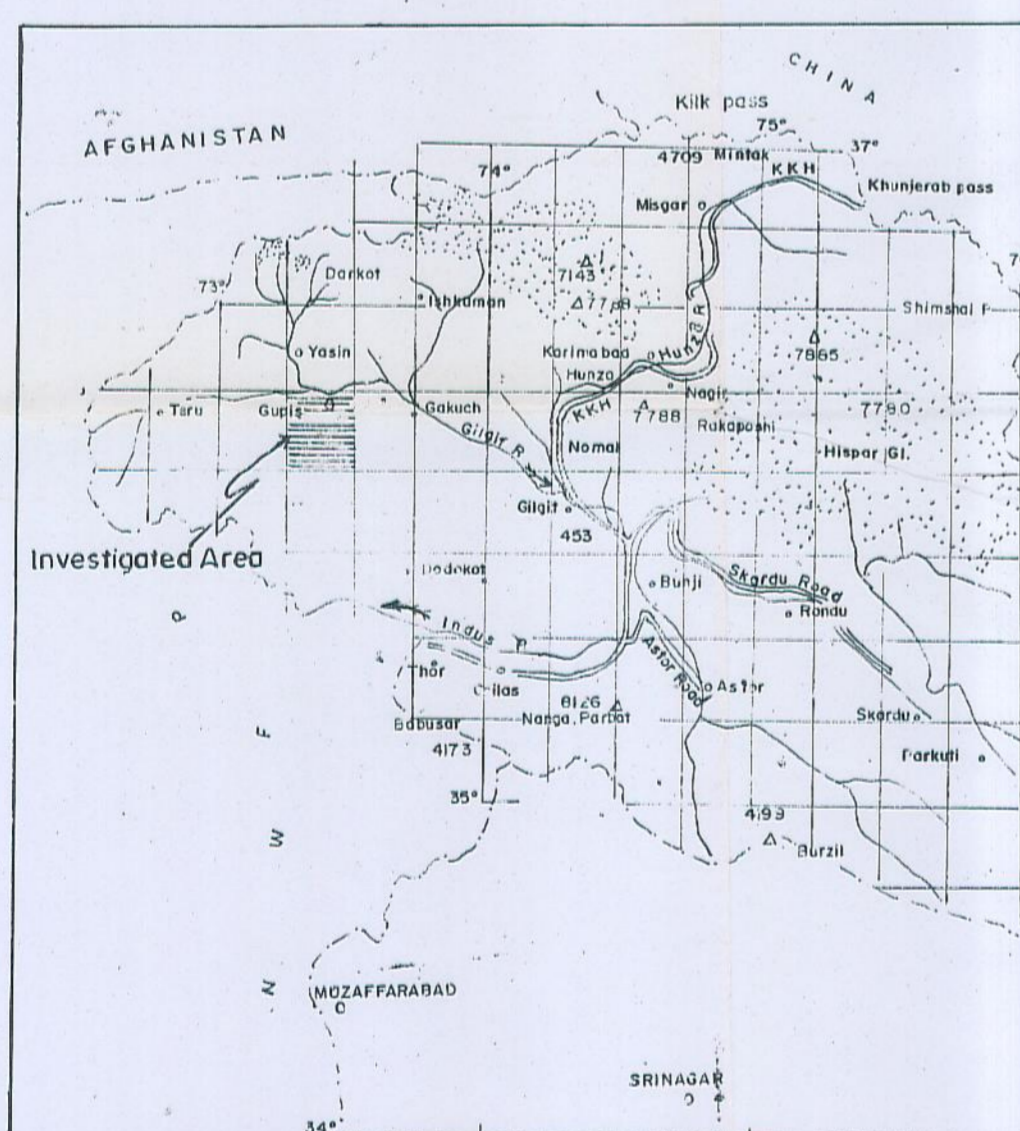
Early Cretaceous: Meta basalt and andesite with minor green schist gray wacks, quartzite, amphibolite & gneiss  
 Agglomerate and meta basalt (Kca)  
 Mostly dirty brown to grey marble (Kcm)

**GEOLOGICAL SYMBOLS**

75: Foliation  
 (a) (b) (c): Contact (a) sharp (b) gradational (c) probable  
 A—B: Line of section  
 sz: Sulphide Zone

**NON GEOLOGICAL SYMBOLS**

GI: Glaciated area  
 ---: Un metalled Road  
 17590 Δ: Spot height in feet  
 ~: Stream (Gahs)  
 ○: Lake  
 - - - - : Foot Path



Drafted by: Muhammad Shafi

SCALE 1:50,000

Geology by: Nasser Ali Khan  
 G. Mujtaba &  
 Tahseenullah Khan

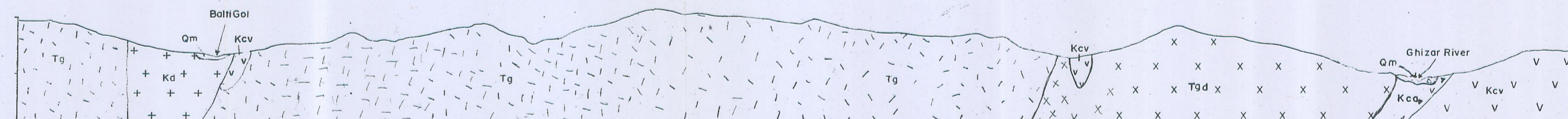
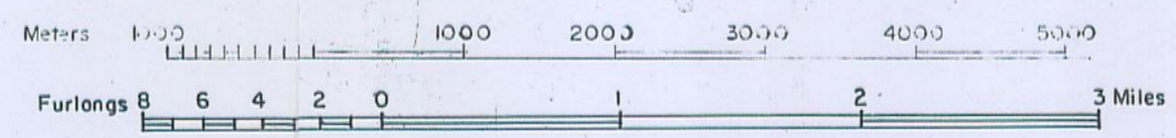


FIG 1. GEOLOGICAL MAP OF THE GUPIS QUADRANGLE(42-H/8) GILGIT DISTT. NORTHERN AREAS PAKISTAN.